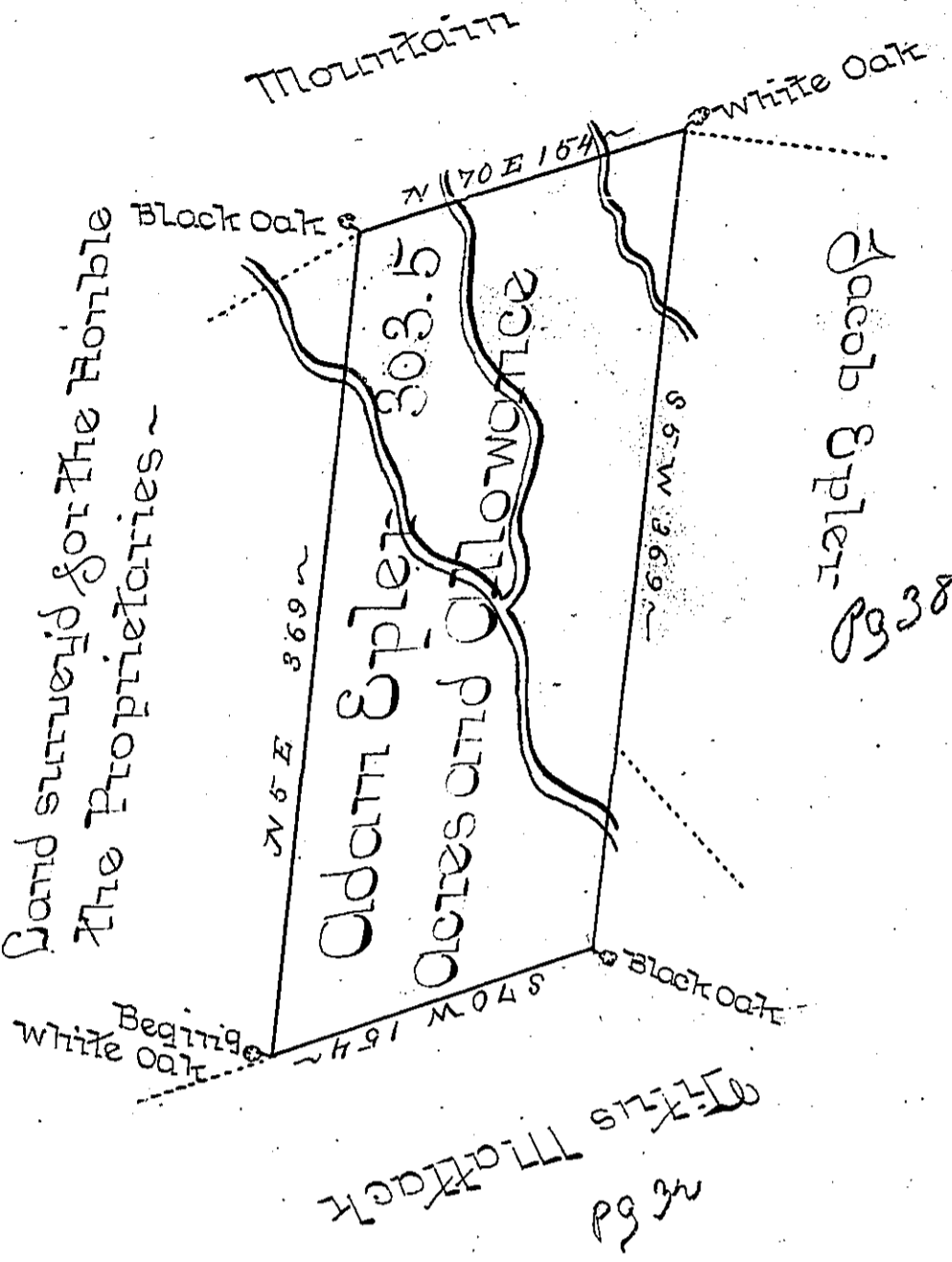


C 136-85-



The Draught of a Tract of Land called Mount Pleasant situate on the Heads of Penns Creek in the County of Cumberland containing Three Hundred Three Acres and an Half & Acre with the usual Allowance of Six Acres Percent for Roads surveyed the 24th Day of September 1766 in Pursuance of an Order No 440 to Adam Epler Bearing Date at Philada the 1st Day of August 1766 -

Wm Maclay Dept^y Survey

To John Lukens Esqr. Survey Genl of the Province of Pennsylvania -

IN TESTIMONY that the above is a copy of the original remaining on file in the Department of Internal Affairs of Pennsylvania, made conformably to an Act of Assembly approved the 16th day of February, 1833, I have hereunto set my Hand and caused the Seal of said Department to be affixed at Harrisburg, this

sixth day of October 1897.

James W. Patton
Secretary of Internal Affairs.